

# BASEMENTS



BEFORE



WORK IN PROGRESS



AFTER

**SUPARI # WATERPROOFING # REHABILITATION of IMPOSSIBLE  
A # WA-R-E-T1996 initiative # CASE study No.1 : BURST of a  
Klinker & FLYASH pits 1500mm; M60:(-)6M;washing of  
fine elements by failure of dewatering system;**

**PITS without  
#dismantling?**



**Shree Cement Silo Pit**

**2 years unsuccessfully attempted by national/international  
agencies; TEAM AAYKA did it in 3daysx3shifts  
.....attaining the#IMPOSSIBLE**

## Lifting & Stabilization of Building under DIFFERENTIAL SETTLEMENT



## REHABILITATION OF STRUCUTRES

### SHRI SHANKARACHARYA JI TEMPLE, KATRA, J& k.



BEFORE



AFTER

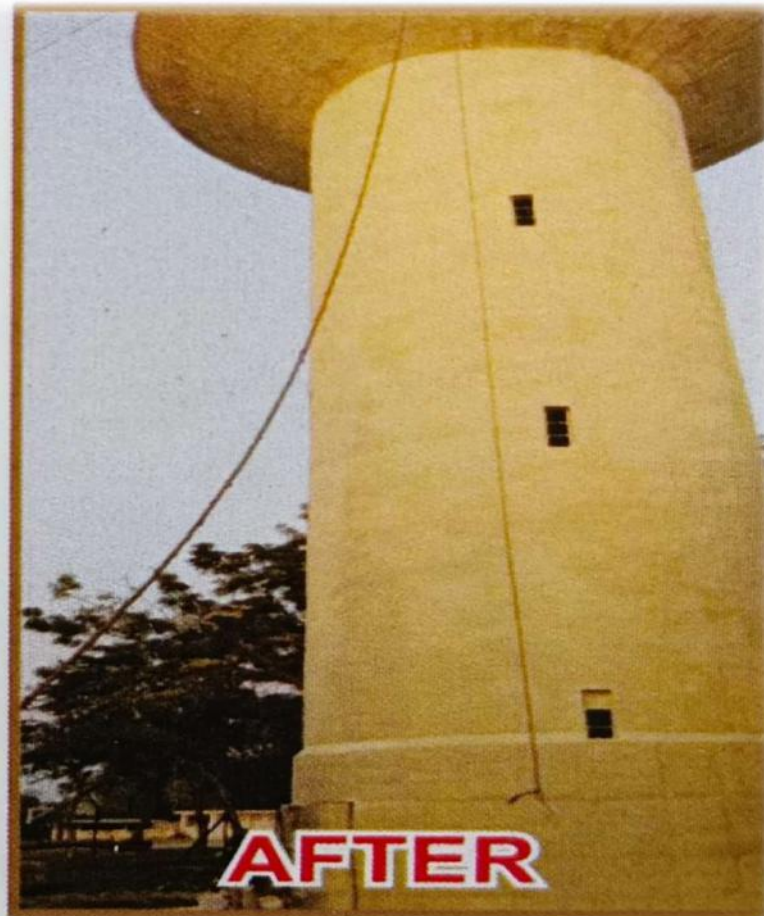
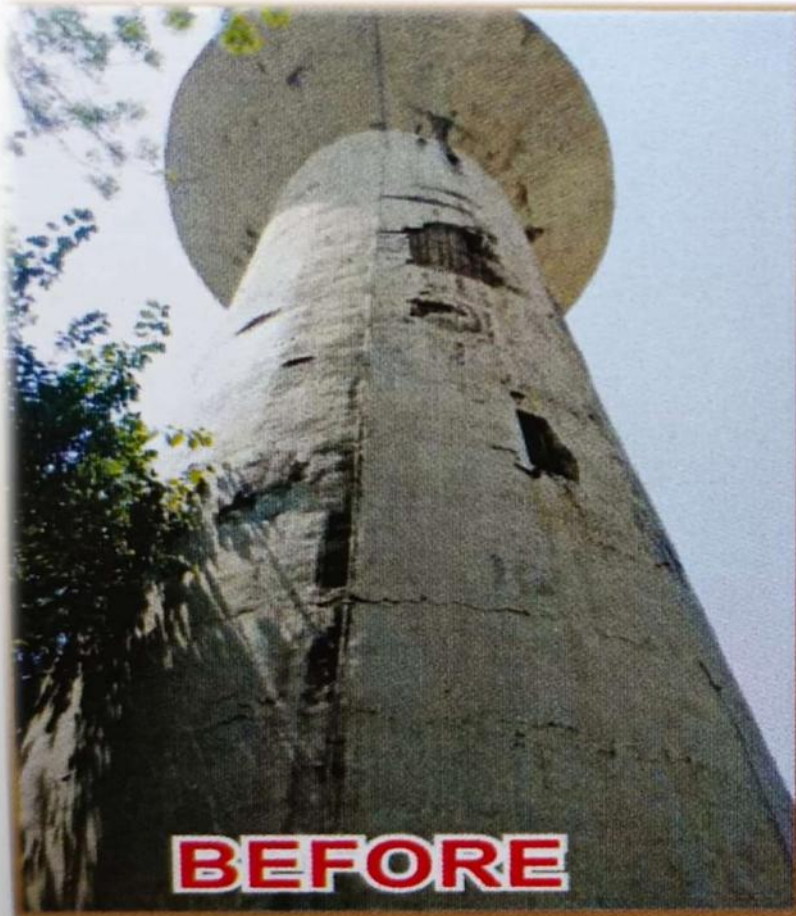


**BEFORE**



**AFTER**

## Rehabilitation of Total Distress Structures



## RISING DAMPNESS IN WALLS







# STRUCTURE REALIGNMENT

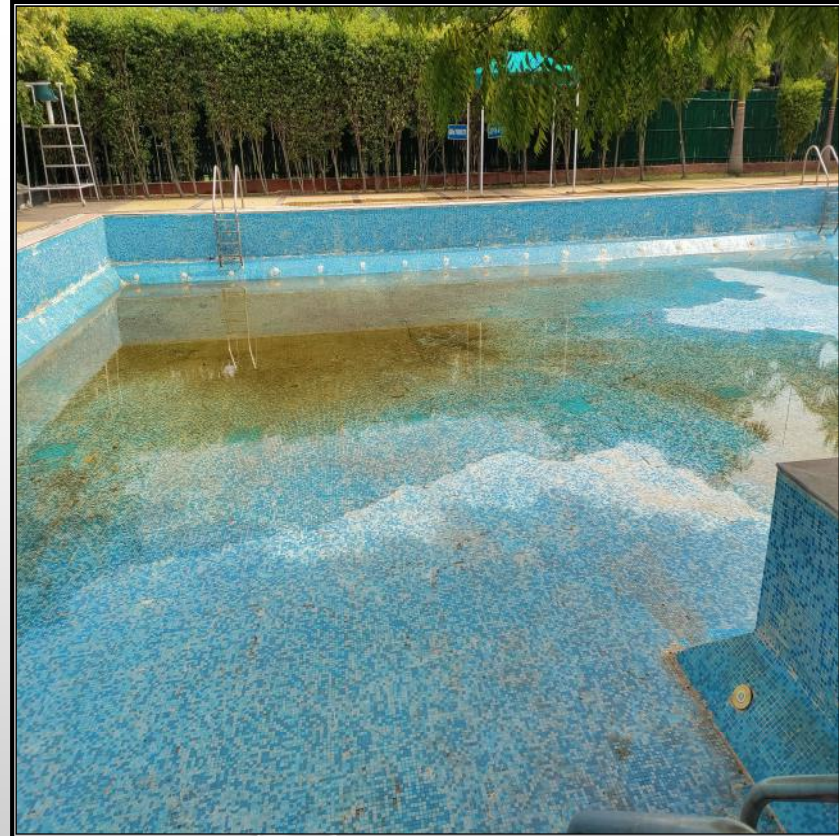


**BEFORE**



**AFTER**

# SWIMMING POOLS



# TOILETS



# TUNNELS



**BEFORE**



**ITPO - PRAGATI MAIDAN**

**AFTER**

## Under Ground Tanks/Over Head Tanks



After 2 YEARS



History:500 KL OHT in TOTAL DISTRESS rehabilitation done using WARET1996  
#WITHOUT DISMANTLING ENGINEERING GUARANTEE: 5(30) years

# WATERPROOFING & REHABILITATION of ROOFS

